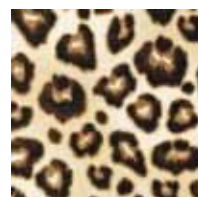


INTO AFRICA



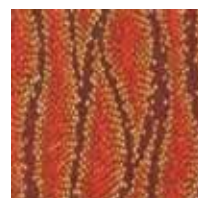
Designed by Toadusew for McCall's Quick Quilts Magazine



8514-14
1 Fat Quarter



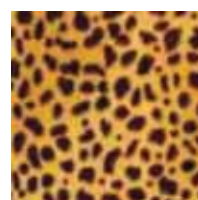
8644-16
1 Fat Quarter



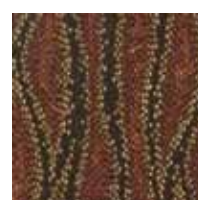
8645-197
1 Fat Quarter



8644-14
1 Fat Quarter



8642-16
1 Fat Quarter



8645-179
1 Fat Quarter



8642-15
1 Fat Quarter



8513-176
1 Fat Quarter



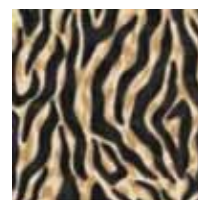
8514-2
1 Fat Quarter



8646-16
1 Fat Quarter



KONA Jet Black
1 3/4 yards



8641-2
1 Fat Q. + 1 1/4 yards

Featuring Fabrics from the Wildside Collection from Robert Kaufman Fabrics. 53 x 73

Kit includes yardage for quilt top and binding. The pattern for this quilt can be found in McCall's Quick Quilts, September 2010. All efforts will be made to provide kits with the fabrics as advertised. Unavailable fabrics will be replaced with a Toad approved selection of similar style and pattern.

ROBERT KAUFMAN
F A B R I C S